



The purpose of the Gem, Lapidary, and Mineral Society of Montgomery County MD, Inc. is “to increase knowledge and popular interest in earth sciences, geology, mineralogy, paleontology, lapidary arts, and related subjects.”

REGULAR MEETINGS

Meetings are held the 2nd Monday of the month from September to June. The Society will meet on **Monday, September 9, 2013**, in the dining room of the Rockville Senior Center, 1150 Carnation Drive, Rockville. A short business meeting will begin at 7:45 pm, but the room is available to us at 7:30 pm. Our speaker for the September meeting will be announced in the September *Rockhouser*.

BOARD OF DIRECTORS MEETING

Meeting will be held **Monday, September 16, 2013**, 7:30 pm, at the home of Andy Muir. All Board members are expected to be there. Any member is welcome to attend but kindly let Andy know if you plan to attend at amuir21@comcast.net or phone 301-990-1370.

PRESIDENT’S MESSAGE: HELLO FELLOW ROCKHOUDERS

To The Class of ‘13 plus infinity,

As you graduate into the summer and the rest of your lives! I would like to give you these words of wisdom. You will face many adversities:

- Rocks are heavy!
- It’s uphill to the car.
- Rocks are hard.
- We are soft.
- You brought the wrong tools.
- You went to the wrong quarry.
- The site was picked over before you were born.
- You need a potty now!
- I thought you brought the toilet paper!
- You have a lid for this bucket?
- Car dragging on the road.
- Flat tire.
- Jack won’t lift car.

Despite all these impediments, know that you will persevere! I therefore say to you, go forth and acquire new rocks and great adventures. Bring the rocks to show-and-tell and write an article for the newsletter about your adventures!

Remember: “Every Rock is Beautiful in Its Own Way!”

Andy B, Prez

IN THIS ISSUE	
Meeting Minutes	2
Prize Winners	2
Board Minutes	2
Field Trips	3
Festival Mineral Exhibit	3
The Lure and Lure of Rocks	4
FRA	4
Member Updates	5
Vulcan Quarry	5
Literary Wall of Fame	6
Websites of Interest	7
Bench Tips	7
Show Table	8
Upcoming Events	8
Tyrannosaurus rex	9

Deadline for the September issue of *The Rockhouser* is August 25, 2013.

CLUB MEETING MINUTES: MAY 13, 2013

The June 10, 2013 meeting was called to order by President Andy Celmer at 7:46 pm, with approximately 69 people attending. It was M/S/P to approve the minutes of the May 13, 2013 regular meeting and of the May 20, 2013 BOD meeting.

FRA: Holly McNeil presented several special effects badges.

President: Andy Celmer asked those who had previously attended Wildacres to share their experiences. Gerald Elgert talked about Bruce Gaber's photography course. Dave Hennessey discussed micro-mounting, silver-smithing, and cabochon making. He displayed a nicely made ginko leaf necklace. Gary and Diane Leaman recounted their faceting and cabochon making classes. Andy discussed the recent EFMLS convention. The club received a certificate of appreciation for their giving to the Eastern Foundation Fund. He presented Wendell with his 1st –place award for large bulletins.

Presentation: Vice President Chris Luzier introduced the speaker for the evening, member Andy Zarins. Andy presented *West Texas Agates, the Origin and History*. He focused on an area in Brewster Co. in southwest Texas. In its geological history the Appalachian and Laramide orogenies all came together here and it was a failed rift zone. This resulted in several volcanically active periods as seen in the stratigraphic column he presented. Andy took us through that column and the surrounding areas pointing out the clues in each formation that come together in the complicated picture of how the unique agates in that layer may have formed. He also showed examples of these agates, both well-known and not so well known, giving the characteristics and how they related to the theory of formation. The theory of formation is much studied and discussed because it can't be recreated in the lab. The surrounding rock, the structures of the agates, and the possible sources of silica all need to be studied to understand the formation of any particular agate. Andy answered many varied questions from the audience. Thanks Andy.

Membership: It was M/S/P to accept the membership applications of Charlene Flynn, Eulane Mellon, the Soderberg Family (Teresa, Joshua. Sr., Joshua, Jr., and Kevin), Mary Ann Beau, and Ray Bridge.

Treasurer: Andy Muir reported the club continues to do well financially. He reported on the club purchase of a new trailer for storage. Mark Dahlman reported on the new, to the club, cases purchased from GLMS-DC. Any Muir will provide interior dimensions in the fall.

EFML Liaison: Wendell Mohr mentioned an upcoming Chesapeake Gem & Mineral Society auction, the Geology Exploration Summer Camp, and several upcoming shows.

Prizes: Rod Towers administered the junior's door prize. Mark Dahlman administered the drawings for the door prize and show table prize.

Adjournment: Meeting adjourned at 9:58 PM.

PRIZE WINNERS!

Junior Table:

Prehnite, Prospect Park, NJ – Claire DeSalvo
Calcite Rhomb – Kevin Soderberg
Zincite from Smelter – Cassie DeSalvo
Agate Egg – Joshua Soderberg

Show Table:

Quartz Scepter, Big Chief Claim, King Co. , WA – Gary Leaman

General:

Hollacodops Trilobite, Alnif, Morocco – Charlene Flynn

CONGRATULATIONS!

Jeff Cessna, Secretary

BOARD MEETING MINUTES: MAY 20, 2013

President Andy Celmer called the June 17, 2013, meeting to order at 7:40 pm.

Board Members present: Andy Celmer, Jonathan Harris, Kristin Lolmaugh, Chris Luzier, Wendell Mohr, Andy Muir; **Guests present:** Mark Dahlman, Holly McNeil; **Board Members not present:** Doug Baum, Eric Kindahl, Rod Towers, Jeff Cessna, Pat Repik-Byrne, and Joel Rosen.

Change in Board Positions: The board discussed the advantages of having a new treasurer every few years, although the by-laws do not require a term limit for the treasurer. Holly McNeil and Andy Muir discussed switching their positions. By email following the board meeting, it was M/S/P to appoint Holly as the new treasurer and Andy as the new "Upstairs Show Co-Chair."

Other Treasurer News: Andy Muir presented a treasurer's report (see regular meeting minutes). The 2012 audit is in progress and is expected to be completed soon. Andy reported he has sent out a number of thank-you letters to people who donated money or items to the GLMSMC. The board discussed several changes to the accounting practices and monthly report-outs of club finances; Holly will work to institute these.

FRA: The board discussed possible purchases to support the FRA members including an earth science kit.

Show: The board performed some initial brainstorming of ideas to celebrate our 50th Show in 2014. Various ideas discussed included expanding our exhibit/demonstration space to include an additional room or rooms at the fairgrounds; printing of commemorative T-shirts, mugs, etc. through a service like Café Press; special mineral giveaways directed at newcomers to the show; targeted marketing to try to boost attendance on Sunday; and a program to help Cub Scouts or Boy Scouts earn merit badges. Wendell Mohr suggested that we might want to get a group like the Washington Sculptor's Group, to demonstrate at our show.

Auction of Vance-Donated Jade: The board is planning an October auction of the donated jade, plus some other items donated to the club. Possible dates are being explored.

President: Additional discussions were had by the nominating committee for the 2014 board positions. Several current board members volunteered to contact possible candidates. Andy Celmer will follow-up on a request from a couple in Oklahoma interested in obtaining some Maryland rocks.

Adjournment: The meeting was adjourned at 9:58 PM.

Andy Muir, Acting Secretary

FIELD TRIPS

BY JONATHAN HARRIS

SATURDAY, JULY 27, 2013: 7:30 am – 12:00 noon, 1219 Calvary Road, Churchville, MD; Total number of attendees is limited to 20 by request of quarry. Mineral types: Zeolites (Stilbite, Heulandite, Laumontite) Pyrite, Quartz, Epidote; Because this is space limited, please reply by July 20, 5PM. Please reply to Jonathan Harris, jgharris7@gmail.com, or 301-545-0808.

SATURDAY AUGUST 24, 2013: Vulcan Stafford Quarry: 7:45 am -12:00 noon. They have done some new digging lately. The quarry mines an amphibolite material that has yielded at times very nice zeolite crystals. It also has pyrite. Please reply to Jonathan at jgharris7@gmail.com, or 301-545-0808 by August 17.

SUNDAY, AUGUST 25, 2013: Crystal Grottos--Maryland's spectacular show cave. We will take a guided tour. There is a fee that will depend on how many people attend. Tours are about 35 minutes and we will try to get on a 10:00 am tour. If we have a large turnout, we could be split into two or more groups. It is important to sign up by email by Monday, August 12, so we can get a discount. The owner accepts **cash only** for all payments. See <http://www.crystalgrottoescaverns.com/grouptours.php> and <http://www.crystalgrottoescaverns.com/index.php> for details.

HOWARD COUNTY STEM FESTIVAL MINERAL EXHIBIT

BY SHARON LYON

Thank you fellow members of the Gem, Lapidary and Mineral Society of Montgomery County for your donation of minerals, rocks and fossils to Howard Community College! Some of the specimens will be used in our classes, some will be placed on display, and some were used at the First Annual Howard County STEM Festival. The STEM (Science, Technology, Engineering and Math) Festival was held at the college on Sunday, June 9, 2013.

The event was a huge success! Although geared toward middle-schoolers, children of all ages and their parents attended. There were presenters from the Center of Disease Control, NCIS, the American Meteorological Society, NOAA, and the American Physics Institutes, just to name a few.

My daughter Anna and I manned a table with a Maryland Mineral Exhibit, and we handed out small baggies of minerals. Some of the polished agates and tiny labeled specimens that the Society donated were in the baggies. They were a real hit with the kids, and we handed out more than 100 baggies. We then challenged the kids to match what was in the baggies to the big specimens on display on the table. In some cases you would think that the children had never seen a rock or fossil before! We hope to participate again next year. Thank you again for the donation – you never know when one mineral specimen will inspire a future rock hound.



THE LURE AND LORE OF ROCKS: OPAL

BY KRISTIN LOLMAUGH

Opal was formed many millions of years ago, when a combination of silica and water flowed into cracks and spaces in the ground. This then gradually hardened and solidified to become opal. Opals contain water, which makes them very sensitive to heat. They are soft and can be cracked or chipped easily. Opals should be stored in moist absorbent.

There are two versions on how the name came to be. One says Opal derives from the Greek "opalios" meaning "all-seeing gem" and other says it comes from the Sanskrit word for "upala," meaning precious stone.

In Indian mythology, the virgin Goddess of the Rainbow was turned into an opal by the Mother Goddess because she was being chased by suitors Brahma, Vishnu and Shiva. During Roman times, the Latin word "opalus" came into use. The Ancients, though, believed that Precious Opal came into its true being when the Storm God, jealous of the beauty of the Rainbow God, shattered the rainbow to bits which then fell to the earth and were captured within the Opals.

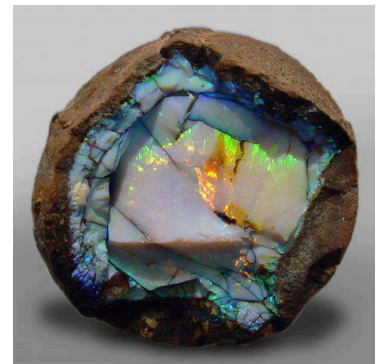
Opal is said to soothe erratic emotions and enhance personal courage. It enhances your ability to communicate what is in your heart. It has a strong connection to the sea and creatures of the sea. It is said to be the stone of love, but only to faithful lovers. The opal will bring misfortune to an unfaithful lover.

It is said that precious opal, with its display of fire, can spark creativity, and that the "dance" of its fire can

help people enjoy their lives. The light-colored stones have long been associated with helping people become less visible to others and also in improving eyesight. The gemstone has been associated with the sacral chakra, imbalances of which can cause problems with addictions. It is a stone of "happy dreams and changes," a stone of communion, revelation and vision, and a bringer of love and understanding.



Photos by Kristin Lolmaugh



Photographer Unknown

FUTURE ROCKHOUNDS OF AMERICA (THE MOCKS)

Ages 10-15

Next Meeting Date: September 9, 2013

Time: 7:45 - 9:00 pm

Location: Sunroom Cafeteria, Rockville Senior Center

Holly McNeil announced to the group that she will be stepping down as FRA advisor and that Mark Dahlman will be taking her place. Holly will stay involved through the end of 2013 to assist with the transition. Welcome and thank you Mark!

June 10th Meeting – No one can accuse the MOCKS of being inefficient – they managed to complete the requirements for the Maps badge in one session! We learned about many different types of maps (road, political, geological, and topographical), where to obtain them and how to read them. We learned to pin-point longitude and latitude coordinates as well as a bit of background on the Prime Meridian. Each FRA member practiced reading road maps by navigating the streets of Paris using their individual maps and coming up with proper directions to get to and from various landmarks. We studied a topographical map of the area and learned how to read contour lines and quickly identify what the landscape would look like at a given location. Unfortunately, the planned treasure hunt had to be scrapped because of the local tornado warnings...instead the MOCKS completed the final component of the badge, map making, by drawing maps of our meeting room.

Upcoming Fall Programs

Mark Dahlman, the new FRA advisor, discussed options for the fall program with the group. The MOCKS decided they wanted to work on the Gold, Fluorescents, and Stone Age Tools & Arts badges.

For more information on the Future Rockhounds of America program, please contact Mark Dahlman at 301-428-0455 or fra_advisor@glmsmc.com.

NEW MEMBERS

The club is delighted to welcome two new single members and two new families:

- Charlene Flynn, 21925 Greenbrook Drive, Boyds, MD 20841-9029, charlfly@verizon.net
- Eulane Mellon, 904 Beacon Square Court #408, Gaithersburg, MD 20878-5408, emellon@aol.com
- The Soderberg Family – Teresa (tzmermaid@gmail.com), Joshua, Sr. (joshsoderberg@hotmail.com), Joshua, Jr., and Kevin, 12605 Norcross Court, Silver Spring, MD 20904-2969
- Mary Ann Beau & Ray Bridge, 1014 Quaker Knoll Road, Sandy Spring, MD 20860-1270, guncontrol@verizon.net

UPDATES

- Member Skip Hughes email address is : almightyrubberchicken@hotmail.com
- Patrick Haynes new address is: 901 Sean St., Socorro, NM 87801.

VULCAN HAVRE DE GRACE QUARRY

BY GERALD ELGERT

Saturday, June 8, 2013: This was a joint trip with the Northern Virginia Mineral Club. Eighteen members from our own Gem Lapidary and Mineral Society of Montgomery County had signed up. Perhaps due to dire warnings and predictions of inclement or even dangerous weather conditions, only Andy Zaris, Jon Harris, Erich Grundel, and I showed up.

After a short lecture on safety procedures by the quarry management, a caravan was formed and we all drove down into the lower level of the quarry. The recent rains caused much of the ground area to be a muddy slurry, maybe more aptly described as, "Too thick to drink and too thin to plow." More than once did I feel my shoes being sucked off in attempting to just walk through this tenacious muck.

The collecting area we were assigned to had the look of being picked over. Still, finds were to be made in turning over some of the larger slabs and sorting through the finer rubble that littered the area. Soon I was collecting pyrite cubes and small faces of feldspar, calcite and siderite. Some of the calcite was Iceland spar.

On the way into the quarry we passed a huge rhombohedron of calcite that I had intended to collect on the way out. It's still there. One of the members of the Northern VA club found several three to four inch pyrite cubes on the underside of a slab he had pulled out. This was probably the best find of the day.

Just before leaving I heard this voice saying, "Gerald, turn around." It was Jon Harris, telling me that I had wandered too close to the cliff face, a forbidden zone. That was probably why I was having such a good time in picking up all manner of good looking stuff. So, maybe the next time, our club will be the first in and we will come back with buckets full.



Photos by Gerald Elgert

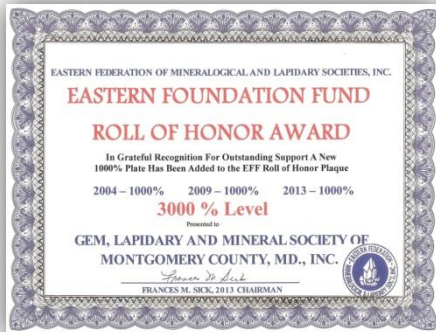
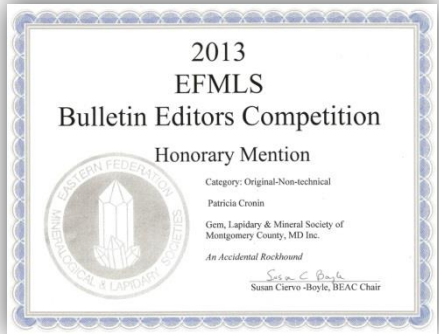
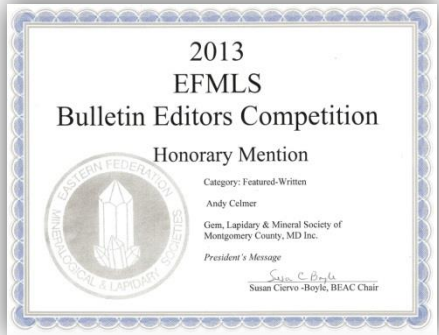
LITERARY WALL OF FAME

Congratulations to six of our members for their literary accomplishments. Wendell Mohr received the EFMLS First Place, large bulletins award. Conrad Smith received 3rd place for his Junior Article. Andy Celmer received two Honorary Mentions – one for his June 2012 President’s Message and one for his November 2012 President’s Message. Jonathan Harris also received two Honorary Mentions – one for his February 2012 Field Trip and the other for his December 2012 James Madison University Visit article. Maureen Campeau received an Honorary Mention for her May 2012 article Tucson or Bust. Patricia Cronin received an Honorary Mention for her November 2012 article, An Accidental Rockhound.



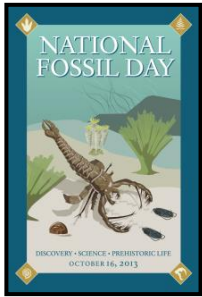
Photo by Gerald Elgert

Our society received two awards for our contributions to the Eastern Federation fund. One honors our contribution since the last convention. One dollar donated per person is a 100% level. We were at the 400% level! The other notes that our name will be inscribed on an honor roll plaque.

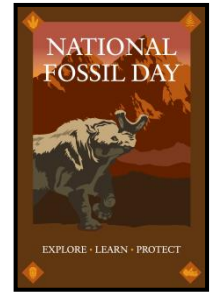


WEBSITES OF INTEREST

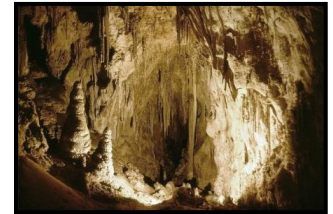
BY WENDELL C. MOHR



Special for Junior Members for Something to Do on Summer Vacation: National Fossil Day™ (October 16, 2012) by the National Park Service at nature.nps.gov/geology/nationalfossilday/. NPS has loads of interesting material. Among many topics, see Climate change in the Fossil Record, A Fossil Preservation Law, The Story of the Missing Fossil Park, and information about an Art and Photo Contest. Don't miss Junior Paleontologist Activities, a NPS booklet of 13 pages with all kinds of fun activities: games, word searches, connect the dots, mazes, and other educational features. It is a large file so allow time to download. Have FUN!



The Fault Aven area of Ogof Ffynnon Ddu Cave, Is an 8 minute video by Keith Edwards highlighting the deepest cave in the U.K. See cavingnews.com/20130608-video-ogof-ffynnon-ddu-fault-aven-series. Go "straightway" to the second longest cave in Wales that carries that long, nearly unpronounceable Welch name. You may wish to visit the parent page, <<http://cavingnews.com/>> in association with the National Speleological Society which is a blog of current events with items on photography, equipment and many other topics .



What is Sunstone? At geology.com/gemstones/sunstone, contributed by Hobart King, you will find an explanation of the cause and effect of the "adventurescence" which makes this gem so attractive. Faceted or cabbed, these various colored feldspar stones are very desirable. Localities are cited.

Photos by R. Weller/Cochise College



BENCH TIPS

BY BRAD SMITH

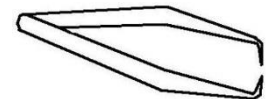
Drill Breakage

Using a small drill is difficult for a beginner, especially if it is hand held in a flexshaft or Dremel or Foredom tools. They are easily broken if you push too hard or if you tilt the drill while it's in the hole.

Remember that drilling always goes easier with lubrication. A little wax or oil is all you need. Almost anything will work - Three and One, beeswax, mineral oil, injection wax, car oil, olive oil, or one of the commercial cutting waxes. The lubricant helps to move chips out of the hole and reduces friction of the drill against the side of the hole, keeping the drill cooler.

Find the Balance Point

With odd-shaped pendants or earrings it's often difficult to find the right place to attach a bail or loop so that the piece is balanced and hangs straight. A quick way to make a tool for this is to modify a set of tweezers. Any set of tweezers will work. Spread the tips, sharpen them with a file, and bend the tips at a right angle to point towards each other. To use the tool suspend the pendant or earring between two sharp points to see how it will hang.



Finishing Pierced Patterns

After sawing patterns there's always a little cleanup to do, and the smaller cutouts can be a challenge. Needle files (7-8 inches) can get into the larger areas, and escapement files (4 inches) can get into some of the corners. But I often find myself looking for even smaller files. I couldn't even find them at a watchmaker tools supply company, so I had to try something else. I ended up grinding down the tip of a 4" barrette file using a separating disk (or cutoff wheel) in your Dremel or Foredom.



Be sure to wear your safety glasses when using this tool. A flake of steel in your eye makes for a bad day.

More Bench Tips by Brad Smith are at [facebook.com/BenchTips/](https://www.facebook.com/BenchTips/)
or see the book "Bench Tips for Jewelry Making" on Amazon

SHOW TABLE: June 2013

Thanks to those who bring items for sharing at the meetings.

Exhibitor	Specimen (s)*	Locality
Jeff Cessna	Sphalerite (fl)* Hydrozincite (fl)* Calcite (fl)	Sterling Hill, NJ Sterling Hill, NJ
Wendell Mohr	Amethyst incl Calcite	Rio Grande do Sul, Brazil
Gary Leaman	Geodes	Unknown
Diana Leaman	Agate from thundereggs	Unknown
Andy Celmer	Celestite	Madagascar
Dave Hennessey	Wildacres project	Spruce Pine, NC
Chuck Mason	"Catoctin Tears" Newly created Obsidian	Frederick County, MD April 2013
Jonathan Harris	Amphibole* or chlorite, pyrite	Vulcan Havre de Grace Quarry, MD
Elmer Lantz	Pyrite/Marcasite Vanadinite	MS AZ
Barb Burr	Pyrite Sun	IL
Gerald Elgert	Higher form of life*, Cryptozoan	Washington Co., MD
George Durland	4 Terlingua type calcites	1. Terlingua, TX, 2. Lampasas, TX, 3. Coahuila, Mexico, 4. Logansport, IN
Andy Muir	Calcite sphere 2 Eggs	Peru Unknown
Linda Smith	Sharks teeth	Aurora, NC
Dave Fryauff	Chromian diopside* Wernerite scapolite	Hunting Hill Quarry, Rockville, MD Quebec, Canada

* indicates self-collected or self-made

UPCOMING EVENTS

- Patuxent Lapidary Guild is offering cabbing and silversmithing classes – visit www.patuxentlapidary.org
- Prince Georges County Parks & Recreation and the Southern Maryland Rocks and Mineral Club are sponsoring lapidary classes - Clearwater Nature Center (301-297-4575) or <http://www.smrmc.org/classes.html>
- August 9 – 11, 2013 – East Coast Gem, Mineral & Fossil Show, Better Living Center, 1305 Memorial Avenue, W. Springfield, MA, Special exhibit of the Carolyn Manchester Collection, www.mzexpos.com
- August 16-18, 2013 – Gem Miners Jubilee, Lebanon, PA. Friday & Saturday 10:00 am – 6:00 pm,, Sunday 10:00 am – 4:00 pm. www.gem-show.com, 301-565-0487

- September 14-15, 2013 – 48th Annual Gem Mineral & Jewelry Show, Zembo Shrine, Third and Division Roads, Harrisburg, PA, Saturday 10:00 am – 6:00 pm, Sunday 10:00 am – 5:00 pm, www.rockandmineral.org, Central PA Rock and Mineral Club
- September 28-29, 2013 – Franklin Sterling Gem & Mineral Show. Saturday 9:00 am – 5:00 pm, Sunday 10:00 – 4:00 pm, Franklin School, Washington Avenue, Franklin, NJ
- November 23-24, 2013 – 22nd Annual Gem Mineral and Fossil Show, Hub Ballroom, Georg Mason University Campus, Saturday 10:00 am – 6:00 pm, Sunday 10:00 am – 4:00 pm, www.novaminedclub.org

TYRANNOSAURUS REX GETS LONG-TERM LEASE AT SMITHSONIAN’S NATURAL HISTORY MUSEUM

The arm was found first, by a hiker in a rugged section of a Montana wildlife refuge. The body had been frozen in time — and rock — for ages, stuck in a death pose for posterity.

When paleontologists finished excavating the old bones, they had recovered one of the most complete *Tyrannosaurus rex* skeletons, a major specimen that is coming to the Smithsonian’s National Museum of Natural History on a long-term loan.

The current exhibition of dinosaurs is seen at the Smithsonian National Museum of Natural History, which is acquiring the bones of a Tyrannosaurus rex on a 50-year loan from the U.S. Army Corps of Engineers.

The museum announced Thursday that it will borrow the T. rex for 50 years from the Army Corps of Engineers, which owns it, and the state of Montana, which has had it since the late Cretaceous Period. The big beast — named the Wankel T. rex after Kathy Wankel, the rancher who made the prehistoric find — will be trucked to the Mall for National Fossil Day on Oct. 16, then put on temporary display until the museum’s dinosaur exhibit closes for a \$48 million renovation next spring. Eventually, the 35-foot-long skeleton will be mounted in a lifelike pose in the new dinosaur hall when it opens in 2019.

The trip will end the Smithsonian’s long, frustrating search for the king carnivore. It will also add considerable heft to the Natural History Museum’s collection: The Wankel T. rex will surpass just about every one of the roughly 127 million specimens and artifacts held by the world’s second-most-visited museum.

“It will be one of our most important and iconic objects,” said Kirk Johnson, the museum’s director. The Hope Diamond remains the crown jewel of the collection. But, Johnson said, a natural-history museum is nothing without dinosaurs, and no dinosaur captivates people quite like *Tyrannosaurus rex*.

“If you stand next to a real T. rex, it is just an awesome experience,” he said. “Their teeth are the size of bananas. Their skulls are huge. They’re one of the great predators of history. They’re impressive in size, scale — everything. Just imagine an animal that big, that awesome, alive.”

The Wankel T. rex — estimated to have weighed six to seven tons — died in a riverbed near the eventual site of Fort Peck Reservoir. By the time Wankel stumbled upon the first lower-arm bones of a T. rex ever found, the land was controlled by the Corps. Thus, the Corps owns the skeleton, although the fossils have been conserved, studied and displayed at Montana State University’s Museum of the Rockies in Bozeman.

Adapted from an article by J. Freedom du Lac, The Washington Post, June 27, 2013

If you are planning a trip and want to know what clubs you might be able to visit, it would be worthwhile to visit the American Federation of Mineralogical Societies website. Check out their newsletter archives at <http://www.amfed.org/news/default.htm>.



BOARD OF DIRECTORS

President – Andy Celmer, 4798 Mid County Court, Monrovia, MD 21770-9417, 301-865-4442
Vice President – Chris Luzier, 847 Springdale Drive, Millersville, MD 21108-1436, 443-995-5363
Secretary – Jeff Cessna, 12116 Clifondale Drive, Silver Spring, MD 20904-1941, 301-680-7963
Treasurer – Holly McNeil, 22 South Duke Street, Rockville MD 20850-1014, 301 605 7179
Junior Advisor – Rod Towers, 19609 Gunners Branch Road, Germantown, MD 20876-2738, 301-972-1264
Field Trip Chairman – Jonathan Harris, 11932 Goya Drive, Potomac, MD 20854-3313, 301-545- 0808
Membership Chairman – Doug Baum, 11205 Golden Meadow Ct., Germantown, MD 20876-1740, 301-515-4641
Show Chairperson – Pat Repik-Byrne, 9 Starlight Court, Potomac, MD 20854-2658, 301-279-5962
Property Manager – Joel Rosen, 833 Rampart Way, Union Bridge, MD 21791-9325, 410-775-7937
Immediate Past President – Eric Kindahl, 301 Violet Court, Mount Airy, MD 21771-5206, 301-820-2161
EFMLS Liaison – Wendell Mohr, 9509 Emory Grove Road, Gaithersburg, MD 20877-3501, 301-926-7190
Bulletin Editor– Kristin Lolmaugh, 1282 Terrace Lane, Arnold, MD 21012, 410-647-2959

Life Members: Larry Harrison, Wendell Mohr, and Juan Proaño

Society Address: Gem, Lapidary, and Mineral Society of Montgomery County MD., Inc.
P. O. Box 444, Gaithersburg MD 20884-0444; Web Site: <http://www.glmsmc.com/>
All Society correspondence is to be sent to this address except that which is intended for the *Rockhounder* and its editor. Such items are to be sent to the editor’s email address – kristinlolmaugh@gmail.com

Permission to copy material printed herein, except specifically copyrighted items, is granted, provided credit is given.

Award Winning Bulletin
EFMLS, AFMS



TIME SENSITIVE
DATED MATERIAL
FIRST CLASS MAIL

THE ROCKHOUNDER
of Gem, Lapidary, and Mineral Society
of Montgomery County, MD, Inc.
Kristin Lolmaugh
1282 Terrace Lane
Arnold, MD 21012